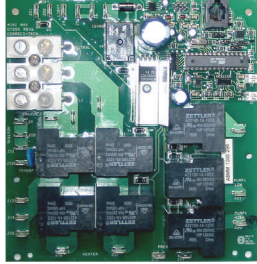




PC BOARDS - CTI

IMPORTANT Please specify the software revision when ordering a PC Board.
Contact us if you are unsure which revision you require.

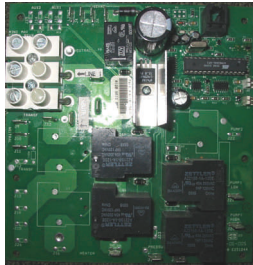


MODEL Mini Max Digital 240V

LIST \$ 283.80

Reverse compatible with all previous versions of the MINI MAX PCB

<u>PCB PN#</u>	<u>REVISION</u>	<u>APPLICATION</u>	<u>TOPSIDE</u>
4-10-1503D	base PCB	requires programming	
4-10-1503D59C	R59C	CTI; Aqua Spa Pak; Strong; Pacific	1-628B-S
4-10-1503D75B	R75B	Aruba; Hydro Spa	1-630U
4-10-1503D76	R76	CTI; Hydro Spa	1-628H-APSTD
4-10-1503D80	R80	Ingenious; HydroWave; Nu-wave Tuff Spa; ASI (Action Spa); Scandia	1-628-MS2
4-10-1503D96	R96	Generic	1-628-MS
4-10-1503D87	R87	Orca Bay, Coast Mountain	1-628E
4-10-1503D91	R91	Obara	1-630A

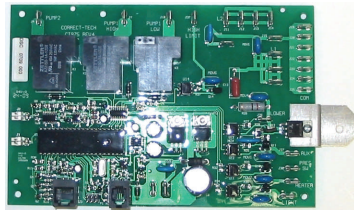


MODEL Mini Max Digital 120V

LIST \$ 205.20

<u>PCB MODEL</u>	<u>REVISION</u>	<u>APPLICATION</u>	<u>TOPSIDE</u>
4-10-1503C	R59C	Generic	1-628B-S3; 1-628B-S; 1-629M

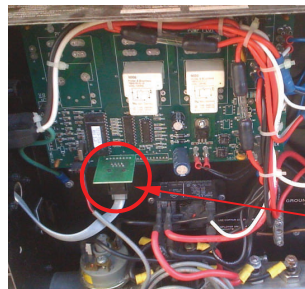
YES - THESE ARE AVAILABLE AGAIN!



MODEL Digital Signetic Hi CTI 975

LIST \$ 353.76

<u>PCB PN#</u>	<u>REVISION</u>	<u>APPLICATION</u>	<u>TOPSIDE</u>	<u>NOTE</u>
4-10-1501A	base PCB	requires programming		
4-10-1501A58	R58	CTI; Sunrise; Sunclass	1-629DS	use R63 for circ pump applications
4-10-1501A88	R88	Coast Mountain	1-629F-BLS	replace with 1-629DS and PCB 4-10-1501A58
4-10-1501A27B	R77	Pacific Spas	1-629FE	R77 is updated R27
4-10-1501A26	R26	Nu-wave; Ingenious; Southwest; Scandia; Aries; ASI (Action Spa) - note: no topside available		
4-10-1501A89A	R89A	Obara	1-629-S	



Digital Signetic STI (with 8-wire Topside Control Panel Cable)

STI PC boards must be replaced with PCB 4-10-1501A58 + new temp/hi-limit sensors + new topside panel 1-629DS or 1-629DS2

How to identify
Topside control (8-wire) phone style plug socket is horizontal and perpendicular to the main PC board

The Digital Signetic STI PC Board and the Topside Control Panel with 8-wire Cable are **NO LONGER AVAILABLE**